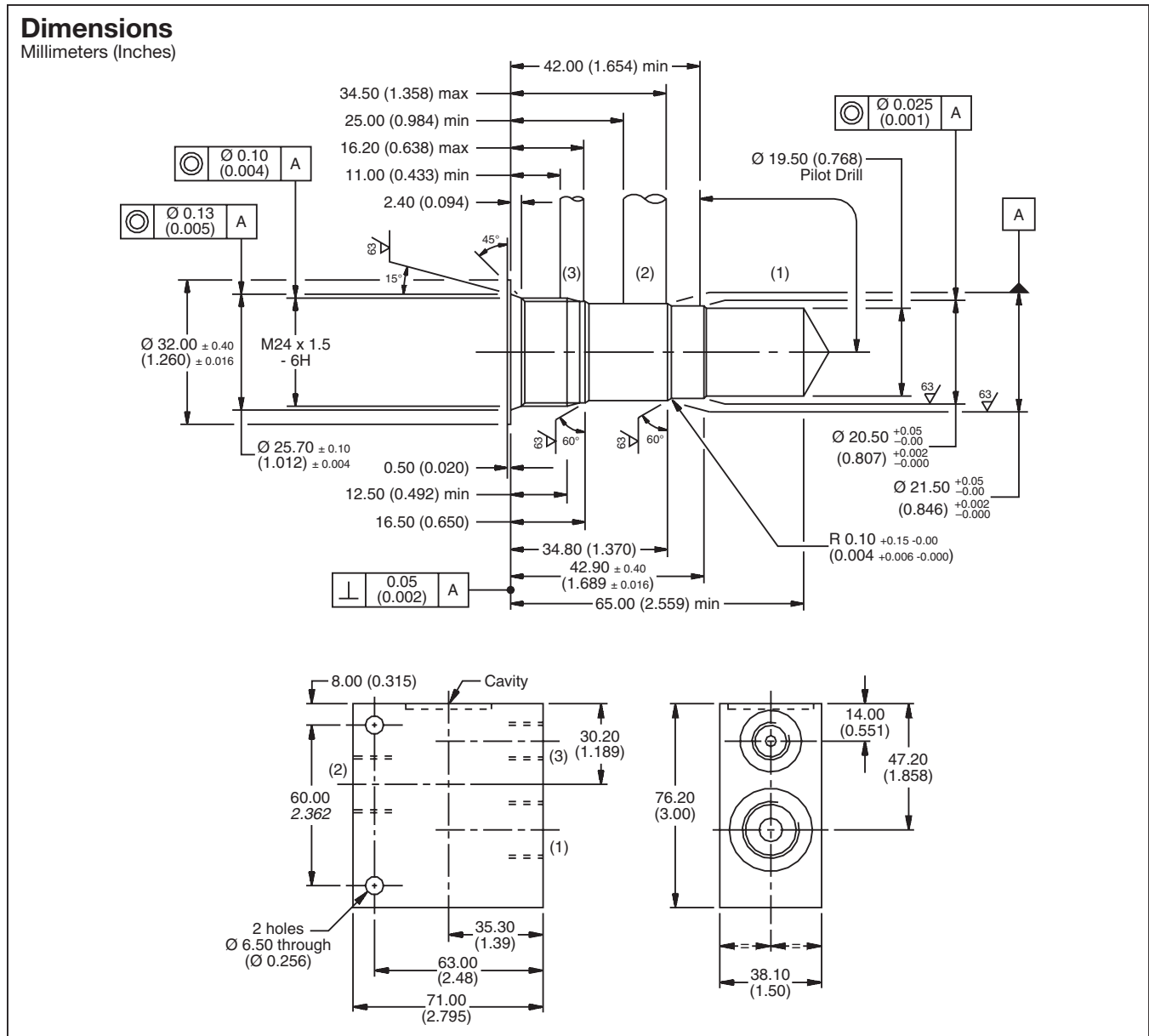


For additional information see Technical Tips on pages BC2-BC3.



Ordering Information

LB10	253	S
Line Body	Port Size	Body Material

Code	Port Size
253	1-1/4 SAE (Main) 3/8 SAE (Aux)

Code	Body Material
S	Steel

***Please be advised that this is a non-core line body.**
 Additional lead-time and/or pricing requirements may exist when ordering.

- CV
Check Valves
- SH
Shuttle Valves
- LM
Load/Motor Controls
- FC
Flow Controls
- PC
Pressure Controls
- LE
Logic Elements
- DC
Directional Controls
- SV
Solenoid Valves
- PV
Proportional Valves
- CE
Coils & Electronics
- BC
Bodies & Cavities
- TD
Technical Data